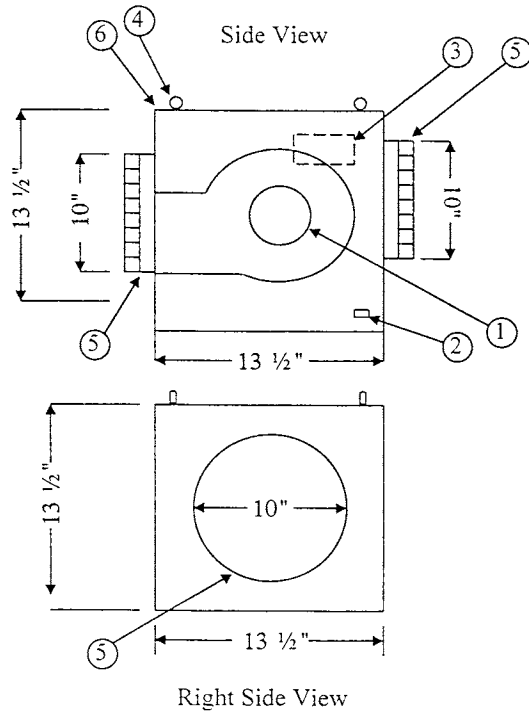


BIOLOGICAL
Controls

SUBMITTAL DRAWING

MICROCON ExC-BB Blower Box



- (1) BLOWER, PSC FORWARD CURVED, 1/5 HP 115V - 50/60 Hz, 3.20 amps (H) 2.07 (L), THERMAL RESET PROTECTED AIRFLOW 495 CFM HIGH, 435 CFM LOW
- (2) TIE-IN CABLE CONNECTION TO FILTER MODULE
- (3) 2 X 4 ELECTRICAL HANDY JUNCTION BOX FOR CUSTOMER CONNECTION, WITH 5 AMP FUSE
- (4) EYE HOOK SUSPENSION HANGER (ALL 4 CORNERS)
- (5) 10" DIA. X 2" HIGH - STEEL STARTER COLLAR
- (6) UNIT CONSTRUCTED OF 20 GA. EPOXY PAINTED GALVANNEALED STEEL

WEIGHT: 33 LBS.

ELECTRICAL WIRING TO BE IN ACCORDANCE WITH THE LATEST NEC STANDARDS.

DRAWN FOR		<p>BIOLOGICAL 749 Hope Road <i>Controls</i> Suite A Eatontown, NJ 07724</p>				
STANDARD						TITLE
DRAWN BY	MJE	SIZE	JOB NO.	DWG NO.	168039B0	REV
APPROVED BY	DK	SCALE	DATE	July 17, 2002	SHEET	