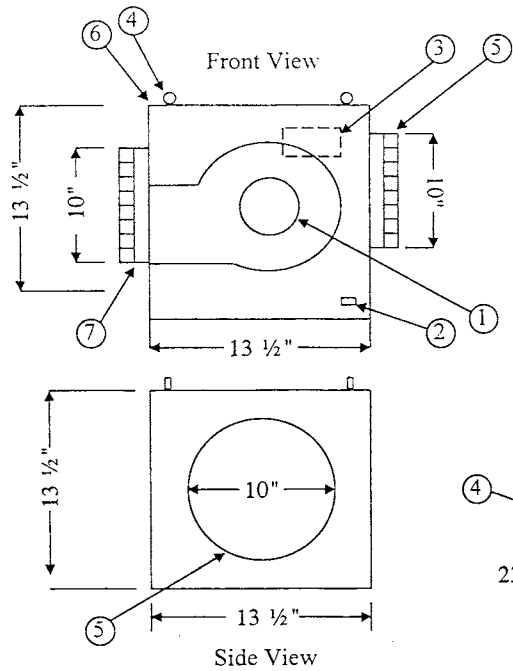


BIOLOGICAL
Controls

SUBMITTAL DRAWING

MICROCON ExC-BUV (MEXCBLUV-002)



BLOWER BOX

- (1) BLOWER, PSC FORWARD CURVED, 1/5HP, 115V - 50/60 Hz, TWO SPEED, 3.2A (HIGH) 2.07A (LOW) THERMAL RESET PROTECTED, AIRFLOW 495 HIGH, 435 LOW
- (2) TIE-IN CABLE CONNECTION TO FILTER MODULE
- (3) 2 X 4 ELECTRICAL JUNCTION BOX FOR CUSTOMER CONNECTION, WITH 5 AMP FUSE
- (4) 4 EA. THREADED EYE HOOK SUSPENSION HANGERS
- (5) 10" DIA. X 2" HIGH-STEEL STARTER COLLAR (INLET)
- (6) UNIT CONSTRUCTED OF 20 GA. EPOXY PAINTED GALVANEALD STEEL
- (7) 10" DIAM. X 2" HIGH - STEEL STARTER COLLAR (EXHAUST)

WEIGHT 28 #

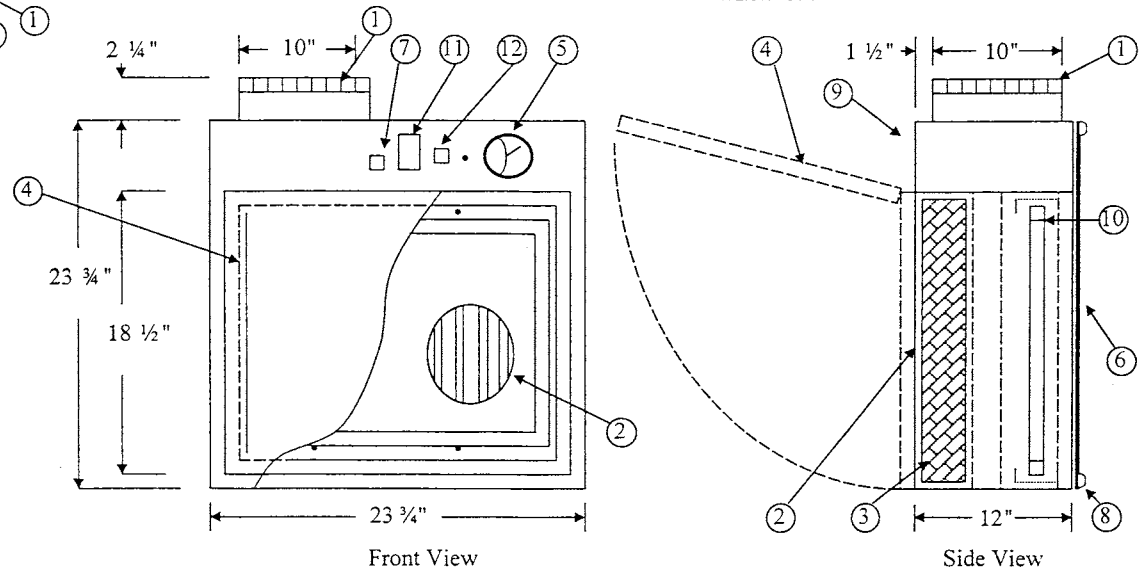
ELECTRICAL REQUIREMENTS: ELECTRICAL WIRING IS IN ACCORDANCE WITH THE LATEST NEC STANDARDS.

FILTER MODULE

- (1) 10" DIA. X 2" HIGH STEEL STARTER COLLAR
- (2) 1 EA. 22" X 16.5" X 4" ALUMINUM FRAME HEPA FILTER 99.99% EFFICIENT ON PARTICLES 0.3 MICRON IN SIZE OR LARGER
- (3) 1 EA. 1" TWO PLY POLYESTER SYNTHETIC 35% EFFICIENT PANEL PRE-FILTER
- (4) 20 GA. HINGED PERFORATED STAINLESS STEEL PROTECTIVE SCREEN WITH #3 POLISHED FINISH
- (5) 1 EA. MINIHILIC STATIC PRESSURE GAUGE

- (6) REAR ACCESS PANEL
- (7) 2-SPEED ON/OFF POWER SWITCH
- (8) 4-SUSPENSION HANGERS
- (9) HOUSING IS CONSTRUCTED OF 16 GA ALUMINUM & 16 GA GALVANIZED STEEL
- (10) HOUSING CONTAINS 4 - 25 W ULTRAVIOLET LAMPS
- (11) ELECTRONIC HOUR METER
- (12) ON / OFF UV INDICATOR LIGHT

WEIGHT 33 #



DRAWN FOR		BIOLOGICAL 749 Hope Road <i>Controls</i> Suite A Eatontown, NJ 07724				
STANDARD						TITLE
DRAWN BY	LVB	SIZE	JOB NO.	DWG NO.	168039B0	REV
APPROVED BY		SCALE		DATE	July 19, 2002	SHEET